

Pam Palmer House

Residential Aged Care



YOUR LIFE
YOUR CHOICE
OUR COMMUNITIES



Live Life Your Way

Life is full of challenges—but age should not be a barrier to living life your way.

Pam Palmer House offers 94 low-care residential places. The open, spacious grounds promote a level of independence, while residents can feel secure in the knowledge that if their care needs increase, high-level care is available in neighbouring facilities.

Nestled within Peninsula Villages, Pam Palmer House residents and their visiting families have easy access to a range of onsite facilities including the bowling green, swimming pool, tea house and manicured garden areas.

Pam Palmer House offers a unique activity program that focuses on building new friendships and involvement in the general community at large. We are proud of the home-like atmosphere we have created for Pam Palmer House residents with our ethos promoting a life worth living and focusing on quality of life.

Our Model of Care

Pam Palmer House is one of three aged care homes within Peninsula Villages – a community-owned organisation with more than 40 years of experience. Our team takes a resident-centred approach to care, ensuring all residents are treated with integrity, compassion and respect.

We have 24-hour Registered Nurse coverage across all aged care facilities, a full-time Nurse Practitioner, dementia and wound care specialists, and a multitude of allied health professionals on site.





Our Living Options

ROOMS

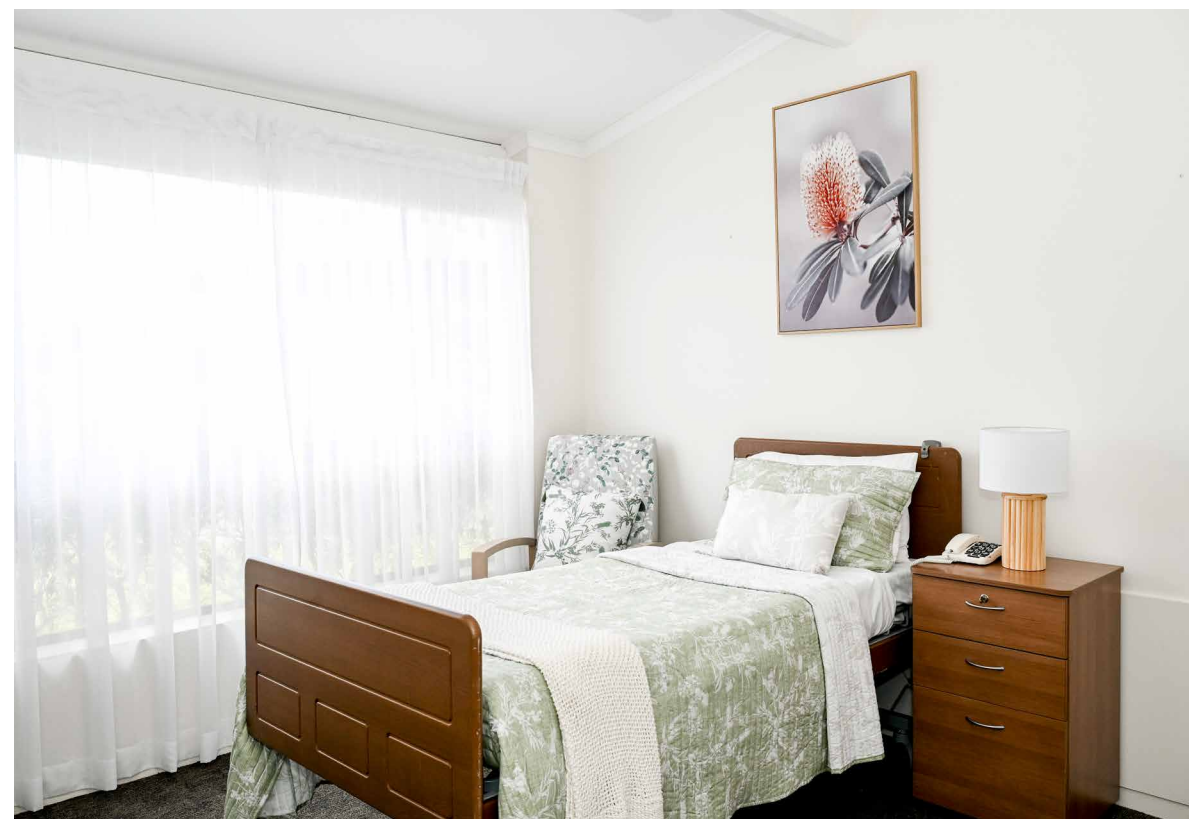
Pam Palmer House is comprised of single and double rooms, all with ensuites, flatscreen TVs, bar fridges and ducted air conditioning with individual room controls. Each room opens onto beautifully maintained grounds, creating a sense of tranquillity and encouraging residents to spend time outdoors.

COMMON AREAS

Residents of Pam Palmer House can step outside their room onto the beautifully maintained grounds of Peninsula Villages to enjoy a cuppa in the tranquil tea house, a stroll by the bird aviary or a barbecue with friends and family. There is a spacious dining room, a kiosk for sweets and treats and a large main hall brimming with events and activities for residents to partake in as frequently as they like.

DINING

Dining is a social experience with meals served in a homely environment that promotes interaction and a sense of community. Peninsula Villages is pleased to have an experienced in-house chef who prepares a seasonal menu for residents within our ageing-in-place facilities. Our ethos for our menus is based on providing flavoursome, nutritious meals that foster an enjoyment of food by our residents. All meals are cooked on site and prepared daily.



Your Life, Your Choice

A host of carefully considered on-site amenities and specialist services add to the appeal of this premium community, where you can keep active, supported and entertained.

Dining is a social experience with meals served in a homely environment that promotes interaction and a sense of community. Residents will be able to view, smell and feel part of the entire experience of the daily food preparation routine within their close-knit household.



Personal care



Health & wellbeing support



Individualised lifestyle activities



Social events & outings

SERVICES & SPECIAL CARE:



24-hour RNs, care & support



Meals made fresh onsite



Personalised nutrition program



Exercise & lifestyle activities



Music and art therapy



Pet therapy



Creative ageing programs

PENINSULA VILLAGES FACILITIES ONSITE:



Physio & Wellness Centre



Onsite GP consulting rooms



Hair salon



Theatre and activity rooms



Hydrotherapy pool



Onsite kiosk and café



Laundry



Visiting beautician



Regular social outings and trips



Private dining room



Community activities



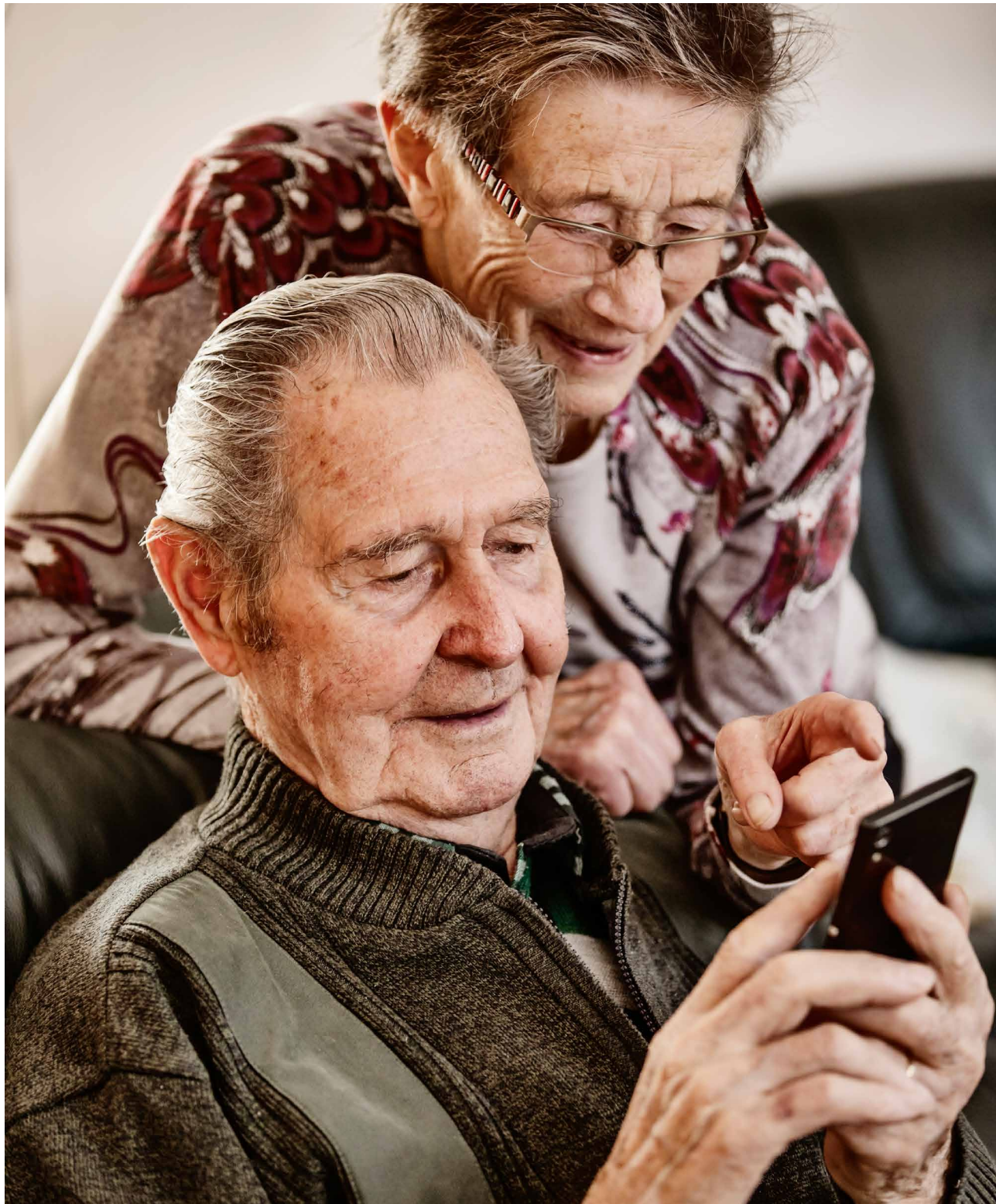
Social & hobby groups



Landscaped gardens & outdoor seating



Vegetable garden



Testimonials

"There are no words to express the gratitude we have for Peninsula Villages. Everyone worked tirelessly and effortlessly to ensure our sister and mother was at home for over 8 years. For those who went above and beyond their duty and there were many, we will be eternally grateful."

Contact us

02 4344 9199

agedcare@penvill.com.au

peninsulavillages.com.au

Connect with us on Facebook



Please note that all images featured in this brochure were current at the time of printing.

